



Hak cipta dan penggunaan kembali:

Lisensi ini mengizinkan setiap orang untuk menggubah, memperbaiki, dan membuat ciptaan turunan bukan untuk kepentingan komersial, selama anda mencantumkan nama penulis dan melisensikan ciptaan turunan dengan syarat yang serupa dengan ciptaan asli.

Copyright and reuse:

This license lets you remix, tweak, and build upon work non-commercially, as long as you credit the origin creator and license it on your new creations under the identical terms.

The logo of Universitas Muhammadiyah Negeri (UMN) is a circular emblem. It features a stylized building with several windows and a central tower, all rendered in a light blue color. The text is centered over this emblem.

LAMPIRAN 1
REKAPITULASI JUMLAH
PENERBITAN SURAT TEGURAN
2011-2014

UMN

Surat Teguran			
No	Bulan	2011	
		Penerbitan ST Lembar	Pencairan ST
			Nominal
1	Oktober	31	8.141.208
2	November	44	348.559.606
3	Desember	6	560.659.366

Surat Teguran			
No	Bulan	2012	
		Penerbitan ST Lembar	Pencairan ST
			Nominal
1	Oktober	1	-
2	November	146	683.771.586
3	Desember	7	456.927.492

Surat Teguran			
No	Bulan	2013	
		Penerbitan ST	Pencairan ST
		Lembar	Nominal
1	Oktober	78	200.000
2	November	895	56.131.033
3	Desember	12	13.999.233

Surat Teguran			
No	Bulan	2014	
		Penerbitan ST	Pencairan ST
		Lembar	Nominal
1	Oktober	316	2.805.860.312
2	November	350	362.352.867
3	Desember	78	278.118.100



LAMPIRAN 2
REKAPITULASI SURAT PAKSA
2011-2014

UMN

Surat Paksa			
No	Bulan	2011	
		Penerbitan SP	Pencairan SP
		Lembar	Nominal
1	Oktober	58	124.295.295
2	November	29	2.382.708.187
3	Desember	0	3.508.495

Surat Paksa			
No	Bulan	2012	
		Penerbitan SP	Pencairan SP
		Lembar	Nominal
10	Oktober	1	-
11	November	1	35.244.240
12	Desember	0	-

Surat Paksa			
No	Bulan	2013	
		Penerbitan SP	Pencairan SP
		Lembar	Nominal
1	Oktober	15	73.898.894
2	November	18	46.143.718
3	Desember	746	-

Surat Paksa			
No	Bulan	2014	
		Penerbitan SP	Pencairan SP
		Lembar	Nominal
10	Oktober	46	1.157.995.538
11	November	75	9.548.430
12	Desember	93	3.508.495



Tahun	Target Penerimaan Pajak	Realisasi Penerimaan Pajak	Presentase Realisasi Penerimaan Pajak
2011	37,824,200,982	14,867,737,234	39.31%
2012	51,214,340,029	17,448,406,119	34.07%
2013	51,571,034,181	17,650,404,361	34.23%
2014	12,145,825,281	17,723,817,023	145.93%



LAMPIRAN 4

Tabel Statistik Deskriptif

UMN

Descriptive Statistics

	N	Minimum	Maximum	Mean	Std. Deviation
ST	48	0	895	96.73	176.533
SP	48	0	746	39.98	108.841
TP	48	0	4399277670	683934304.60	1097795861.423
Valid N (listwise)	48				

a. Predictors: (Constant), LN_SP, LN_ST

b. Dependent Variable: LN_TP

UMMN



LAMPIRAN 5
OUTPUT SPSS

UMMN

OUTPUT SEBELUM TREATMENT TRANSFORMASI

One-Sample Kolmogorov-Smirnov Test

		Unstandardized Residual
N		48
Normal Parameters ^{a,b}	Mean	0E-7
	Std. Deviation	1097040414.92113260
Most Extreme Differences	Absolute	.283
	Positive	.283
	Negative	-.259
Kolmogorov-Smirnov Z		1.959
Asymp. Sig. (2-tailed)		.001

a. Test distribution is Normal.

b. Calculated from data.

UMMN



UMN

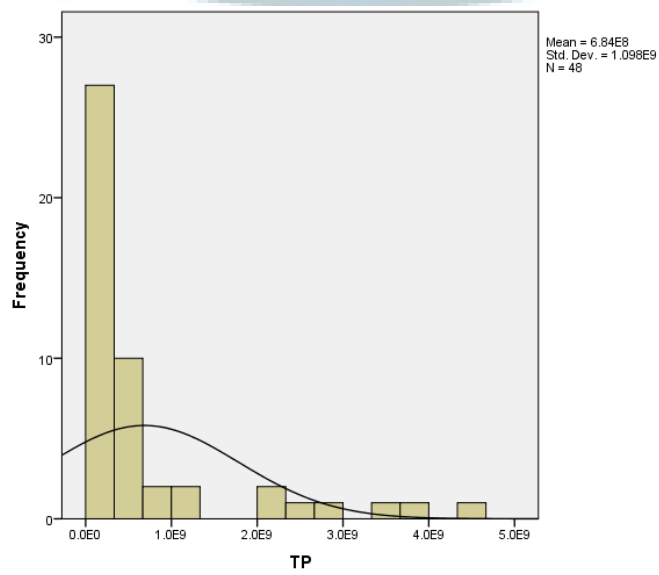
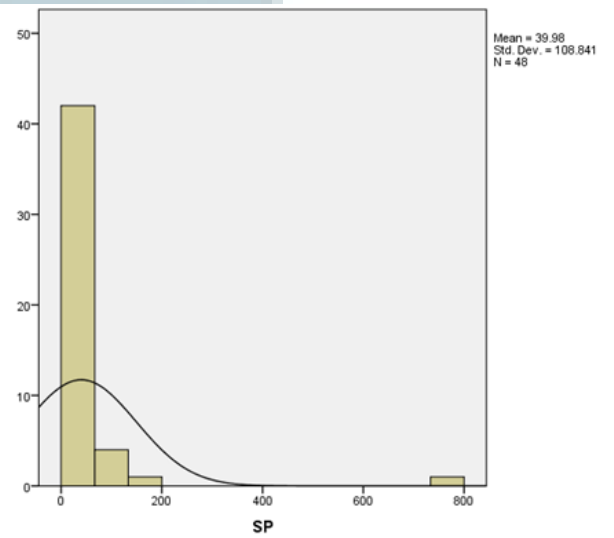
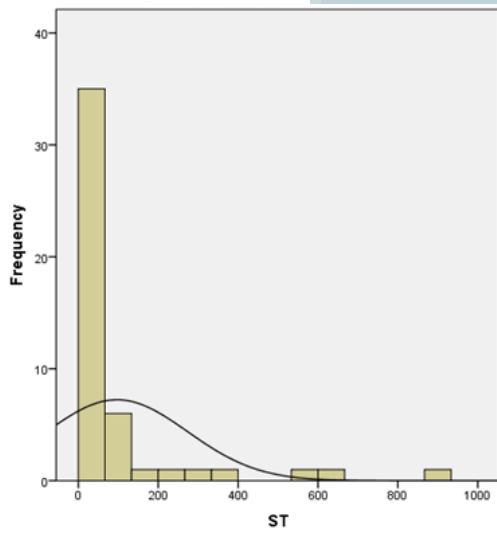
One-Sample Kolmogorov-Smirnov Test

		ST	SP	TP
N		48	48	48
Normal Parameters ^{a,b}	Mean	96.73	39.98	683934304.60
	Std. Deviation	176.533	108.841	1097795861.423
	Absolute	.376	.357	.295
Most Extreme Differences	Positive	.376	.311	.295
	Negative	-.292	-.357	-.267
Kolmogorov-Smirnov Z		2.602	2.471	2.041
Asymp. Sig. (2-tailed)		.000	.000	.000

a. Test distribution is Normal.

b. Calculated from data.





OUTPUT SETELAH TREATMENT TRANSFORMASI

One-Sample Kolmogorov-Smirnov Test

		Unstandardized Residual
N		48
Normal Parameters ^{a,b}	Mean	0E-7
	Std. Deviation	3.96504696
Most Extreme Differences	Absolute	.196
	Positive	.094
	Negative	-.196
Kolmogorov-Smirnov Z		1.355
Asymp. Sig. (2-tailed)		.051

a. Test distribution is Normal.

b. Calculated from data.

UMMN

Coefficients^a

Model	Collinearity Statistics	
	Tolerance	VIF
(Constant)		
1 Ln_ST	.912	1.097
Ln_SP	.912	1.097

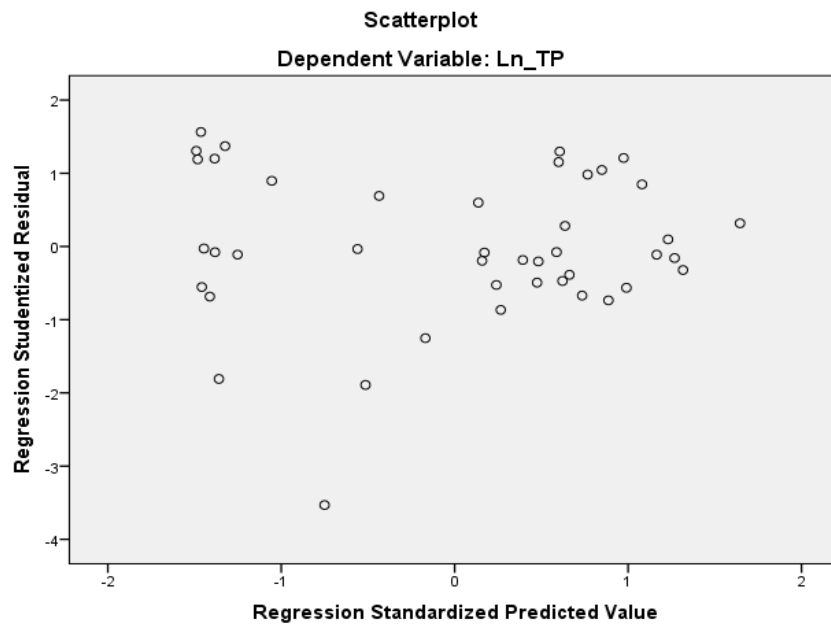
a. Dependent Variable: Ln_TP

Model Summary^b

Model	Durbin-Watson
1	1.604

a. Predictors: (Constant), Ln_SP, Ln_ST

b. Dependent Variable: Ln_TP



Model Summary^b

Model	R	R Square	Adjusted R Square	Std. Error of the Estimate
1	.427 ^a	.182	.146	4.05220

a. Predictors: (Constant), Ln_SP, Ln_ST

b. Dependent Variable: Ln_TP



UMN

ANOVA^a

Model		Sum of Squares	df	Mean Square	F	Sig.
1	Regression	164.370	2	82.185	5.005	.011 ^b
	Residual	738.915	45	16.420		
	Total	903.285	47			

a. Dependent Variable: Ln_TP

b. Predictors: (Constant), Ln_SP, Ln_ST



Coefficients^a

Model	Unstandardized Coefficients		Standardized Coefficients	T	Sig.
	B	Std. Error	Beta		
(Constant)	13.476	1.610		8.370	.000
1 Ln_ST	1.129	.428	.373	2.638	.011
Ln_SP	.306	.346	.125	.883	.382


a. Dependent Variable: Ln_TP





LAMPIRAN 5
TABEL DW

UMMN



LAMPIRAN 6
SURAT KETETAPAN PAJAK
KURANG BAYAR PAJAK
PERTAMBAHAN NILAI BARANG
DAN JASA

UMN



LAMPIRAN 7
SURAT KETETAPAN PAJAK
KURANG BAYAR PAJAK
PENGHASILAN

UMN



UMMN




UMMN



LAMPIRAN 10
SURAT TAGIHAN PAJAK BUNGA
PENAGIHAN

UMMN



LAMPIRAN 11
SURAT TAGIHAN PAJAK, PAJAK
PERTAMBAHAN NILAI BARANG
DAN JASA

UMMN



LAMPIRAN 12
SURAT TEGURAN YANG
DITERBITAKAN

UMMN



UMMN

The logo of Universitas Muhammadiyah Negeri (UMN) is a circular emblem. It features a stylized building with a central tower and several windows, set against a light blue background. The text "LAMPIRAN 14" is centered above the main title, and "SURAT PAKSA" is centered below it.


LAMPIRAN 14
LAPORAN PELAKSANAAN
SURAT PAKSA

UMN



LAMPIRAN 15
BERITA ACARA
PEMBERITAHUAN SURAT
PAKSA

UMN

The logo of Universitas Muhammadiyah Negeri (UMN) is a circular emblem. It features a stylized building with a central tower and several windows, set against a light blue background. The text "LAMPIRAN 16" and "COTOH NOTA PERHITUNGAN" is centered over the logo.

LAMPIRAN 16
COTOH NOTA PERHITUNGAN

UMN



LAMPIRAN 17
FORMULIR KONSULTASI
SKRIPSI

UMMN