



Hak cipta dan penggunaan kembali:

Lisensi ini mengizinkan setiap orang untuk mengubah, memperbaiki, dan membuat ciptaan turunan bukan untuk kepentingan komersial, selama anda mencantumkan nama penulis dan melisensikan ciptaan turunan dengan syarat yang serupa dengan ciptaan asli.

Copyright and reuse:

This license lets you remix, tweak, and build upon work non-commercially, as long as you credit the origin creator and license it on your new creations under the identical terms.

CHAPTER II

GENERAL DESCRIPTION

A. Company Profile

1. History



Figures 1.5.1



Figures 1.5.2

Globe has a meaning as a university with international credibility and not oriented to a particular group. Open white box means every human being, every aspect of life, and the idea is always open to evolve and become better toward the ideals that are not limited. ICT (Information and Communication Technology) must be able to push it. White boxes symbolize the advancement of communication and information technology so that they can be connected in a sophisticated manner. Creating harmonious relationships. The blue color symbolizes ICT.

UMN Dormitory is the facility provided by Multimedia Nusantara University for the students, especially those who came from outside JABODETABEK. UMN


dormitory has purposed to build up the students to be independent, sensitive, and adapt to the environments and foster the spirit of college student's creativity.

UMN Dormitory building was handed over by Summarecon to the Kompas company in 2009. Then, Kompas company assigned Universitas Multimedia Nusantara to handle the building as a Dormitory for the college students. The dormitory began to be occupied in 2011 by the college students. UMN Dormitory is managed by Mrs. Evy Novita Ritonga and under the responsibility of Mr. Ir. Andrey Andoko, M. Sc. (Deputy UMN Rector II).

2. Facilities

Each room is equipped with a spring bed or double single bed, wardrobe clothes, study tables, study chairs, and full AC. For facilities UMN public dormitories are equipped with a guest lobby, pantry on each floor is equipped with a refrigerator, gas stove and microwave), 24-hour internet connection (can be accessed from each room, integrated security system, cleaning service, stationery, canteen, discussion room for study together, place parking for vehicles (cars, motorbikes, and bicycles).

Table 1.1
Room Types

No.	Room Types	Description
1.	 <p data-bbox="516 1755 672 1787">Figure 1.1.1</p> <p data-bbox="407 1801 784 1833">Single Bed Room & Features</p>	<p data-bbox="870 1220 1057 1251">The room size:</p> <p data-bbox="870 1272 997 1304">3.8 x 4 M</p> <p data-bbox="870 1381 984 1413">Benefits:</p> <ul style="list-style-type: none"> <li data-bbox="870 1440 1032 1472">A single bed <li data-bbox="870 1493 1146 1524">A bathroom (shower) <li data-bbox="870 1545 1016 1577">A wardrobe <li data-bbox="870 1598 1081 1629">A desk & a chair <li data-bbox="870 1650 1097 1682">An air conditioner <p data-bbox="870 1766 1114 1797">Room Rate Range:</p> <p data-bbox="870 1818 1227 1850">Rp 2.050.000 – Rp 2.500.00</p>


2.	 <p data-bbox="391 852 756 936">Figure 1.1.2 Double Bed Room & Features</p>	<p data-bbox="846 302 1036 386">The room size: 4 x 4 M</p> <p data-bbox="846 491 1284 795">Benefits: Double single bed Double single desk and two chairs Double wardrobe An air conditioner A bathroom (shower)</p> <p data-bbox="846 900 1219 995">Room Rate Range: Rp 1.350.000 – Rp 1.600.000</p>
----	--	--

Table 1.2
Food and Beverage outlets

No.	Food and Beverage outlets	Description
1.	 <p data-bbox="581 1640 740 1724">Figure 1.2.1 Canteen</p>	<p data-bbox="997 1257 1349 1346">Location: Located next to the laundry.</p> <p data-bbox="997 1419 1341 1507">Opening hours: 08.00 a.m. until 05.00 p.m.</p> <p data-bbox="997 1581 1308 1612">Offers homemade foods.</p>




2.	 <p data-bbox="581 831 740 919" style="text-align: center;">Figure 1.2.2 Pantry</p>	<p data-bbox="993 296 1117 323">Location:</p> <p data-bbox="993 350 1279 378">Located on each floor.</p> <p data-bbox="993 459 1235 487">Seating capacities:</p> <p data-bbox="993 514 1377 600">Two long chairs (4- 6 person) and 1 long table.</p> <p data-bbox="993 682 1192 709">Opening hours:</p> <p data-bbox="993 737 1182 764">Open 24 hours</p> <p data-bbox="993 846 1110 873">Benefits:</p> <p data-bbox="993 900 1182 928">Heater (Oven)</p> <p data-bbox="993 955 1123 982">Television</p> <p data-bbox="993 1010 1122 1037">Cupboard</p> <p data-bbox="993 1064 1052 1092">Sink</p> <p data-bbox="993 1119 1149 1146">Refrigerator</p> <p data-bbox="993 1173 1182 1201">Portable Stove</p>
----	--	--

Table 1.3
Public Area

No.	Food and Beverage outlets	Description
1.	 <p data-bbox="581 1045 740 1136">Figure 1.3.1 Lobby</p>	<p data-bbox="995 394 1321 590">Location: Lobby for building a and building b. Lobby for building c</p> <p data-bbox="995 667 1195 751">Opening hours: 24 hours</p> <p data-bbox="995 835 1252 1031">Benefits: Toilet Security General information</p>
2.	 <p data-bbox="558 1598 764 1688">Figure 1.3.2 Student Lounge</p>	<p data-bbox="995 1157 1357 1304">Location: Located between building a and building b.</p> <p data-bbox="995 1381 1235 1472">Seating capacities: Up to 25</p> <p data-bbox="995 1549 1195 1633">Opening hours: Open 24 hours</p> <p data-bbox="995 1717 1154 1850">Benefits: Printer A bookshelf</p>




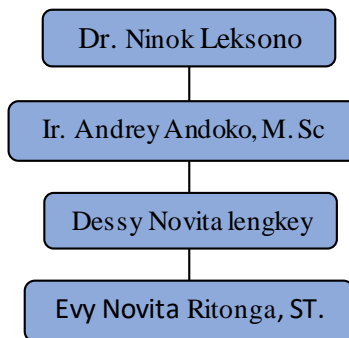
<p>3</p>	 <p style="text-align: center;">Figure 1.3.3 Parking Areas</p>	<p>Location: In front of the building (Car) Behind the building (Motorcycle)</p> <p>Opening hours: 08.00 a.m. until 10.00 p.m.</p>
<p>4</p>	 <p style="text-align: center;">Figure 1.3.4 Basketball Court</p>	<p>Location: Next to the front motorcycle parking area</p> <p>Opening hours: Open 24 hours</p>

Table 1.4
Laundry Outlet

No.	Food and Beverage outlets	Description
1.	 <p data-bbox="526 772 678 861">Figure 1.4.1 Laundry</p>	<p data-bbox="880 394 1351 483">Location: Building C, Beside the canteen area.</p> <p data-bbox="880 558 1224 646">Opening hours: 08.00 am. Until 05.00 p.m.</p> <p data-bbox="880 722 1208 865">Benefits: Daily laundry. Available for any fabrics.</p>

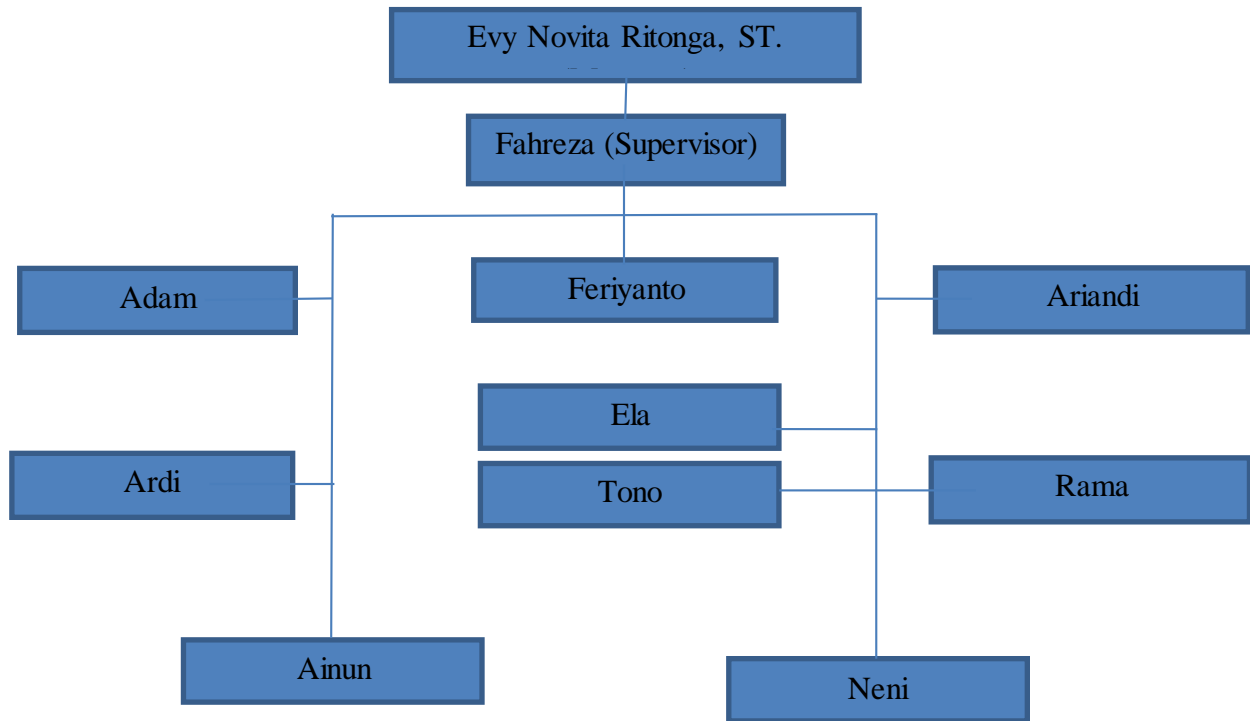
B. Company Chart



Figures 1.5.3

This is the company chart from the Universitas Multimedia Nusantara to the UMN Dormitory Manager. Dr. Ninok Leksono as the rector of Universitas Multimedia Nusantara, Ir. Andrey Andoko, M. Sc. as the Vice-Rector For General And Financial Affairs, Dessy Novita Lengkey as the Human Resource of Universitas Multimedia Nusantara, and Evy Novita Ritonga, ST. as the Manager of UMN Dormitory.

C. Organizational Chart



Figures 1.5.4

This is the organizational chart for the UMN Dormitory headed by Evy Novita Ritonga, ST. as the Manager, Supervised by Fahreza. And, there are staffs that responsible for all area. The responsibility for each staff could be replaced anytime based on the need of the fields such as public area (lobby area, toilets, basketball court, student lounge, canteen, corridor, stairs), room attendance, special project, garden & parking lot area.